



JARAMOGI OGINGA ODINGA UNIVERSITY OF SCIENCE AND TECHNOLOGY
SCHOOL OF EDUCATION
UNIVERSITY EXAMINATION FOR THE DIPLOMA IN SPECIAL NEEDS
EDUCATION
1ST YEAR 2ND SEMESTER 2018/2019 ACADEMIC YEAR
MAIN /KISII

COURSE CODE: ESN 2121

COURSE TITLE: INTERMEDIATE SIGN LANGUAGE

EXAM VENUE:

STREAM:

DATE:

EXAM SESSION:

TIME: 1 ½ Hrs

INSTRUCTIONS:

- 1. Answer Question ONE (COMPULSORY) and ANY other 2 questions**
- 2. Candidates are advised not to write on the question paper.**
- 3. Candidates must hand in their answer booklets to the invigilator while in the examination room.**

QUESTION ONE

THE FACILITATOR WILL FINGERSPELL/SIGN THE FOLLOWING WORDS/SENTENCES. THE STUDENT TO OBSERVE THE FACILITATOR KEENLY AND WRITE DOWN THE WORDS/SENTENCES. THERE SHALL BE NO CANCELLATION OR OVERWRITING OF THE WORDS/SENTENCES. THE WORDS/SENTENCES WILL BE FINGERSPELT/SIGNED THRICE.

Finger-spelt words.

- i. C-O-N-T-I-N-U-E
- ii. S-C-H-O-O-L
- iii. C-L-A-S-S
- iv. R-E-S-P-O-N-S-I-B-I-L-I-T-Y
- v. B-E-F-O-R-E
- vi. I-N-S-I-D-E
- vii. C-O-A-S-T
- viii. L-A-D-Y
- ix. G-R-A-N-D-F-A-T-H-E-R
- x. D-E-M-O-C-R-A-C-Y
- xi. D-W-E-L-T
- xii. R-E-W-R-I-T-E
- xiii. S-P-O-R-T-I-N-G
- xiv. C-O-W-B-O-Y
- xv. P-A-R-L-I-A-M-E-N-T
- xvi. C-U-P-B-O-A-R-D
- xvii. O-F-F-I-C-I-A-L
- xviii. G-R-O-U-P-I-N-G
- xix. E-N-G-L-A-N-D
- xx. L-I-B-R-A-R-Y

(10 marks)

b) Signed words:

- i. GOAT
- ii. LAZY
- iii. POLICEMAN
- iv. CHAIRMAN
- v. HISTORY
- vi. SUPPORT
- vii. TELEPHONE
- viii. POSSIBLE
- ix. YES
- x. SING

(10 marks)

c) Signed sentences from SEE to KSL

- i. Why is the boy crying?
- ii. ME WIFE MINE DIVORCE THINK. WHY WOMAN RUDE//
- iii. J-U-M-A TEACHER BEAT WHY J-U-M-A LATE
- iv. FOOTBALL CHILDREN PLAY NOW//
- v. The leopard killed the dog

(10 marks)

QUESTION 2

- a) What is finger spelling? (2 marks)
- b) As a teacher, explain any five possible factors that may hinder effective use of finger spelling when teaching in a classroom. (10 marks)
- c) Why is finger spelling very important in teaching English to learners with hearing impairment? (4 marks)
- d) Cite some five problems of using speech reading as a strategy of teaching learners with hearing impaired (4 marks)

QUESTION 3

a) Translate KSL SENTENCES TO SEE sentences.

- i. TOMORROW CLOTHES JUMA WASH//
- ii. YOU LORRY DRIVE CAN//
- iii. MAN SICK IMPROVE SHOULD
- iv. HIV AND AIDS TREAT DOCTORS KNOW NOTHING//
- v. AMBULANCE/ DRIVER DRIVE FINISH//

(10marks)

b) TRANSLATE THE SENTENCES FROM SEE TO K.S.L

- i. John went to school yesterday.
- ii. Asha killed a snake last week.
- iii. Today we are playing football.
- iv. Mother has washed all the clothes
- v. The visitors have come.

(10mks)

QUESTION 4

a. Construct the sentences below in written. Each row represents a sentence.
(10marks)



b. Identify the words below

(10 Marks)



i.



ii.



iii.



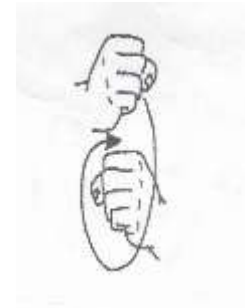
iv.



v.



vi.



ix.



viii.



ix.



x.

QUESTION 5

a) Discuss the development of sign language in France and show its significance in the development of sign language in America. (12 marks)

b) Differentiate between ASL and SEE. Clarify which between the two enhances effective academic learning (8 marks)